

Download and Save to your Phone

Trefriw Village 2 Hour Leisure Scooter Session

This route is great for a first timer on a scooter, and the perfect quick way round to tour what the conwy valley has to offer.

One hour will easily get you to neighbouring village, with many scenic views and a few establishments for food and drink.

Come out of Watling Street car park and turn left and follow the road round and come to the junction for the A470.

IMPORTANT

You must NEVER use (ride) our scooters on the public highway, and your rental agreement requires you to know this. At times where there is no pavement you must dismount and walk with your scooter!

Dismount and walk across the road and walk towards the stone bridge. You can WALK over the bridge now or at the end of your trip where you will see a little cottage called "Tu Hwnt I'r Bont - The bridge hut house". which provides drink and snack with seating by the river . Renowned for its icecream !

Walk back over the bridge, or continue past the bridge into Llanrhwst town centre. Pass through the square and turn left at town clock and follow the footpath out of the town. You will pass fields on your left, and a pedestrian crossing where there is a side road to your left heading for the Train Station. Turn left before the train station and head towards Gowers Bridge.

IMPORTANT

It is the law, PEDESTRIANS ALWAYS have right of way on public footpaths! Be courteous and always stop scootering to pass pedestrians on a typical pavement, as you do not want to bump into them.



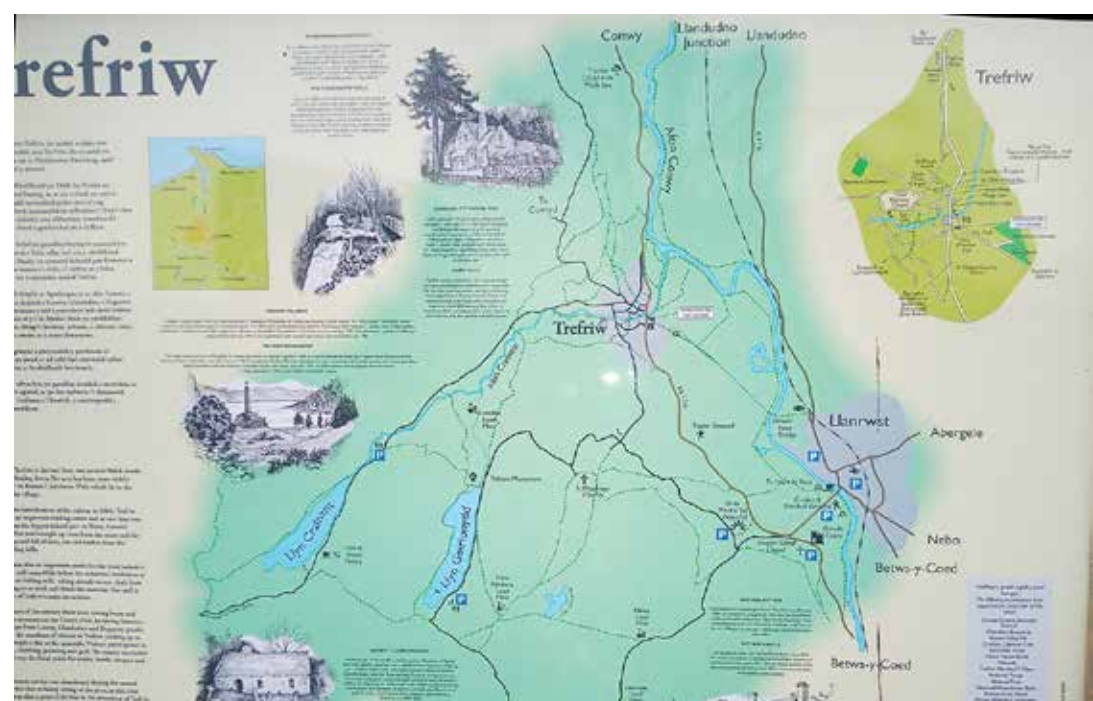
Gowers Bridge



Dismount going over Gowers Bridge

Crossing the bridge you will see the ground work alterations to the valley to help it cope when the winter floods .

Once over you veer right after the bridge, you are on a flat mile stretch into the village of Trefriw. If its very hot, or your on an evening trip and there are midges, half way down the tarmac route there is a parallel gravel track on the right hand side where you may find relief.



Trefriw Village Information Board



View of Trefriw Bridge from the Fairy Falls Hotel

At the end of the road on the left is a tourist information board with lots of information about Trefriw.

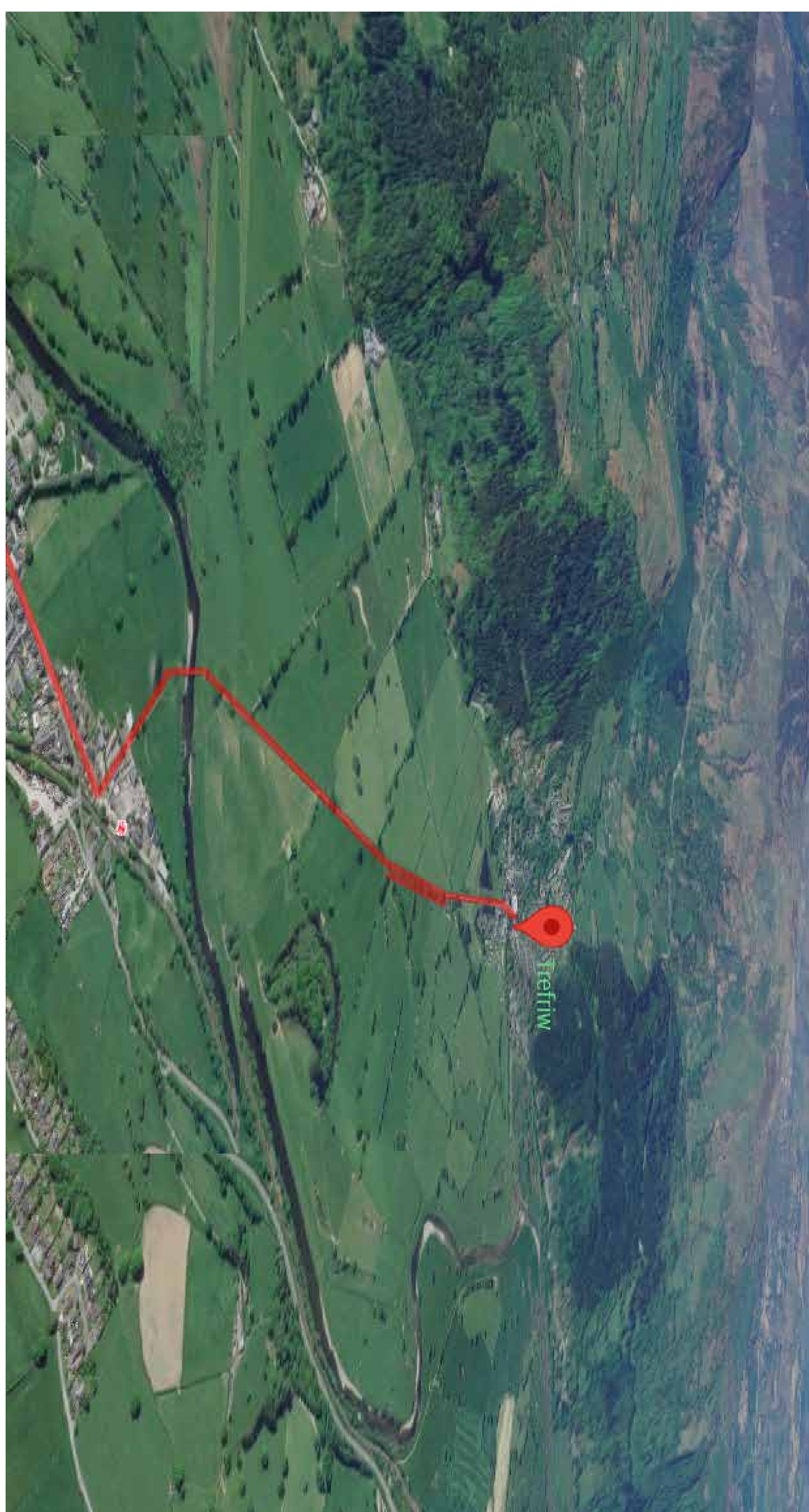
IMPORTANT

You must NEVER use (ride) our scooters on the public highway, and your rental agreement requires you to know this. At times where there is no pavement you must dismount and walk with your scooter!

There are three places to visit and obtain sustenance .

- The Mary Bella's Cafe on the left as you cross the bridge.
- The Fairy Fall Hotel on the right as you cross the bridge.
- If you acquire a garden then "walk" 100 yards through the village where you will discover the Old Ship Inn.

Your return trip is a simple reverse of the direction to get to Trefriw.



Bike Hut, Unit 25, Watling Street Car Park. Llanrwst LI260LS

www.gravitywheelers.com

[Book Here](#)