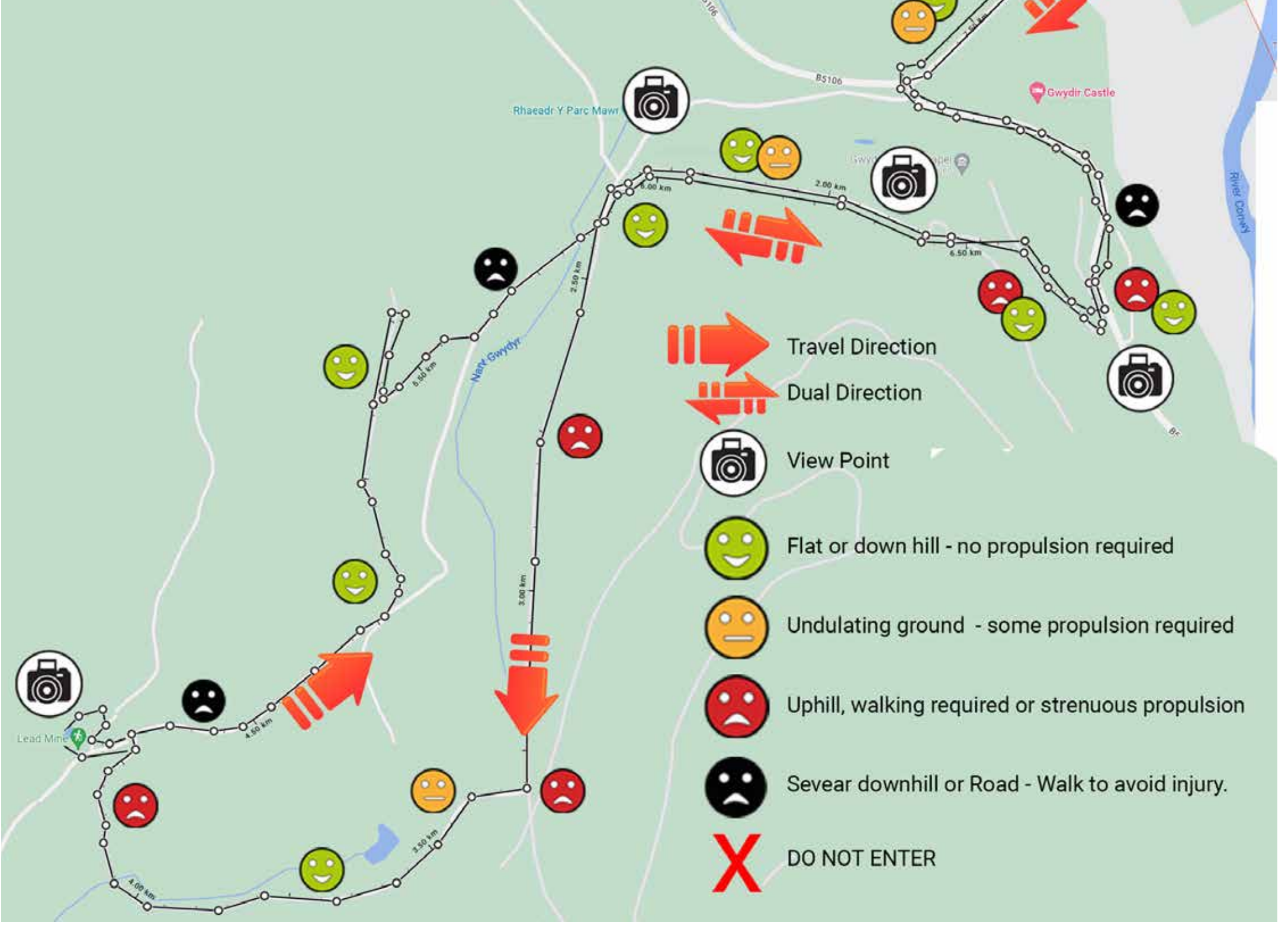




# “Big Hill Turn Right ” 1.45 Hour Scooter Route



This route takes in the basic route of “The Nant” - the first easy access view point within the Gwydir forest. This extended route is a good mix of exercise, view points, and some extreme fun. But it has one grade 9 hill - as our moto goes “the more up - the more down you get!”

You get to see both side of the Nant valley and the Conwy Valley, a spectacualr river and waterfall - View factor 9/10

## The basic route to the Gwydir Forest playground is:

Come out of Watling Street car park and turn left and follow the road round and come to the junction for the A470.

### IMPORTANT

**You must NEVER use (ride) our scooters on the public highway, and your rental agreement requires you to knowledge this. At times where there is no pavement you must dismount and walk with your scooter!**

Dismount and walk across the road and head to the stone bridge. WALK over the bridge pushing your scooter towards the little cottage called “Tu Hwnt l’r Bont - The bridge hut house”. At the little cottage there is a footpath on your left where you can mount and start kick scootering down the strait Nant Road B5106 to the Gwydir Castle!

### IMPORTANT

**It is the law, PEDESTRIANS ALWAYS have right of way on public footpaths! Be curtious and always stop scootering to pass pedestrians on a typical pavement, as you do not want to bump into them.**

On the curve of the bend there is a left hand turn sign posted for Gwydir Castle. Take this turn, staying on the pavement until you reach the entrance and car park for Gwydir castle.



**Please dismount and continue by walking on the road for about 400 yards.**

After 400 yards past the Castle, on the curve of the bend you will see on the opposite side of the road another road leading up, and sign posted to Gwydir Uchaf Capel.



Take this road and start your ascent. At the top of the hill it levels off at the entrance to Gwydir Uchaf Chapel, turn left and head up a smaller hill.



Gwydir Uchaf Chapel



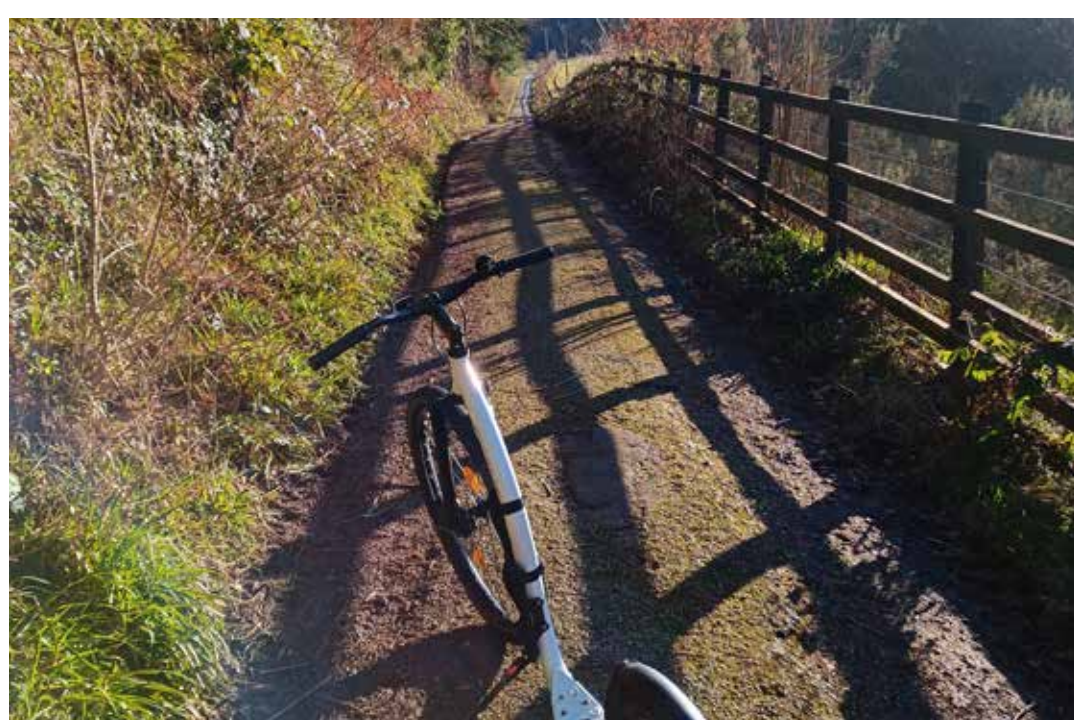
The Nant Valley view point

You are now on the fairly level part of the Nant, you need to **Turn Right**. Within 50 yards you will get to a bench for the first view point of the Conwy Valley.

From here you can continue up into the Gwydir Mawr & Bach car park where many mountain bikers start their journey on this formally know **MTB route called the "Marin Trail"**.



Gwydir Mawr & Bach Car Park



The Big Hill Walk

Go through the car park to the road junction (**Please Stop**) as cars travel fast to get up the hill ! Turn left and start up the hill for 20 yards.

On your left you will then see a footpath going up, and up, and up. Ok to make it sound not so bad, a quarter of the way there is a little BMX track that is fun to play on. Also half way on the right is a slip path down to a view point of the Nant Gwydyr river which can be impressive after recent rain.

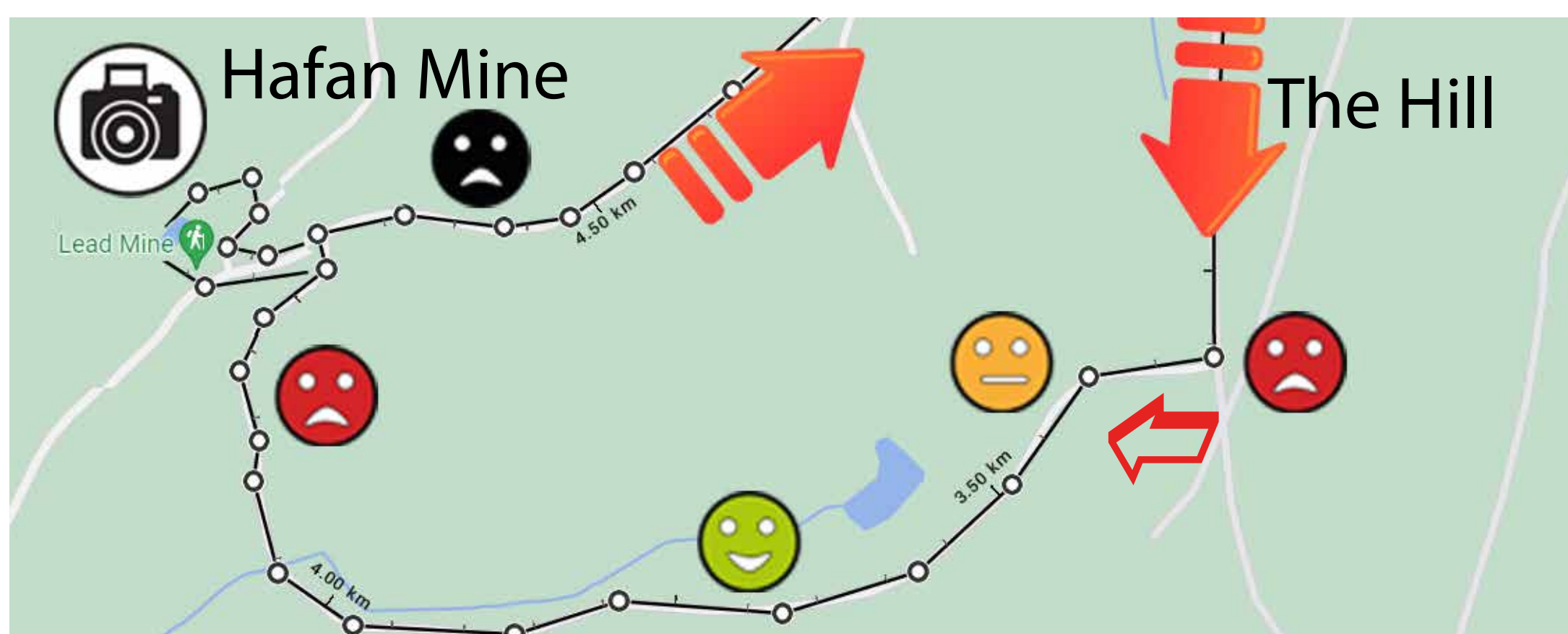


Big Hill BMX Section



Big Hill View Point

So when you get to the top of the hill you are at a junction where you can go left or right. This document covers your travelling **Right**.



The next bit is flat and allows you to catch your breath. 2 mins and you will start to descend into the curved bowl of the valley until you reach the start of the hill upto Hafan Lead Mine.

At the top of the hill look left, up the main road, and you will see the entrance to the Hafan Mine carpark.

After looking around the Hafan Mine you have to travel on the main road down a very steep hill.

**Please dismount and walk this section.**

**Cars race up to cope with this hill, so you need to be careful.**

After 500 yards you will see a foresty track on your left that will cut out a **VERY DANGEROUS bend on the main road**. Take the track left, and watch your speed down here! Use your momentum and stay left, passing a turning on your right. We go straight on to avoid the tight right turn. After you stop, turn around and head back down the hill, and take the turning left onto the track you passed earlier. Again be careful with your speed as this track joins a main road.

**Please dismount and walk this section down the hill. Warning - Cars race up the road to cope with this hill.**



Waterfall Path View



Grey Mare's Trail Waterfall

Walking down the road you will see the entrance into the Gwydir Mawr & Bach on the right. If you have done good on time, with **30 minutes left** you can turn left on the road, signed posted Llanrhychwyn. Walk up the hill for 50 yards and on the right will be a small layby. Lock your scooters here and cross over the road to a wooden gate.

**Please enter the gate carefully as the ascent is steep!** This path takes you down to view the spectacular "Grey Mare's Tail Waterfall".

On Returning to your scooter, head back into the Gwydir Mawr & Bach car park, and pass the Nant Valley view bench again. After passing this you will see the descent down, back home (Uchaf Church Entrance). be careful with your speed on the tarmac road.

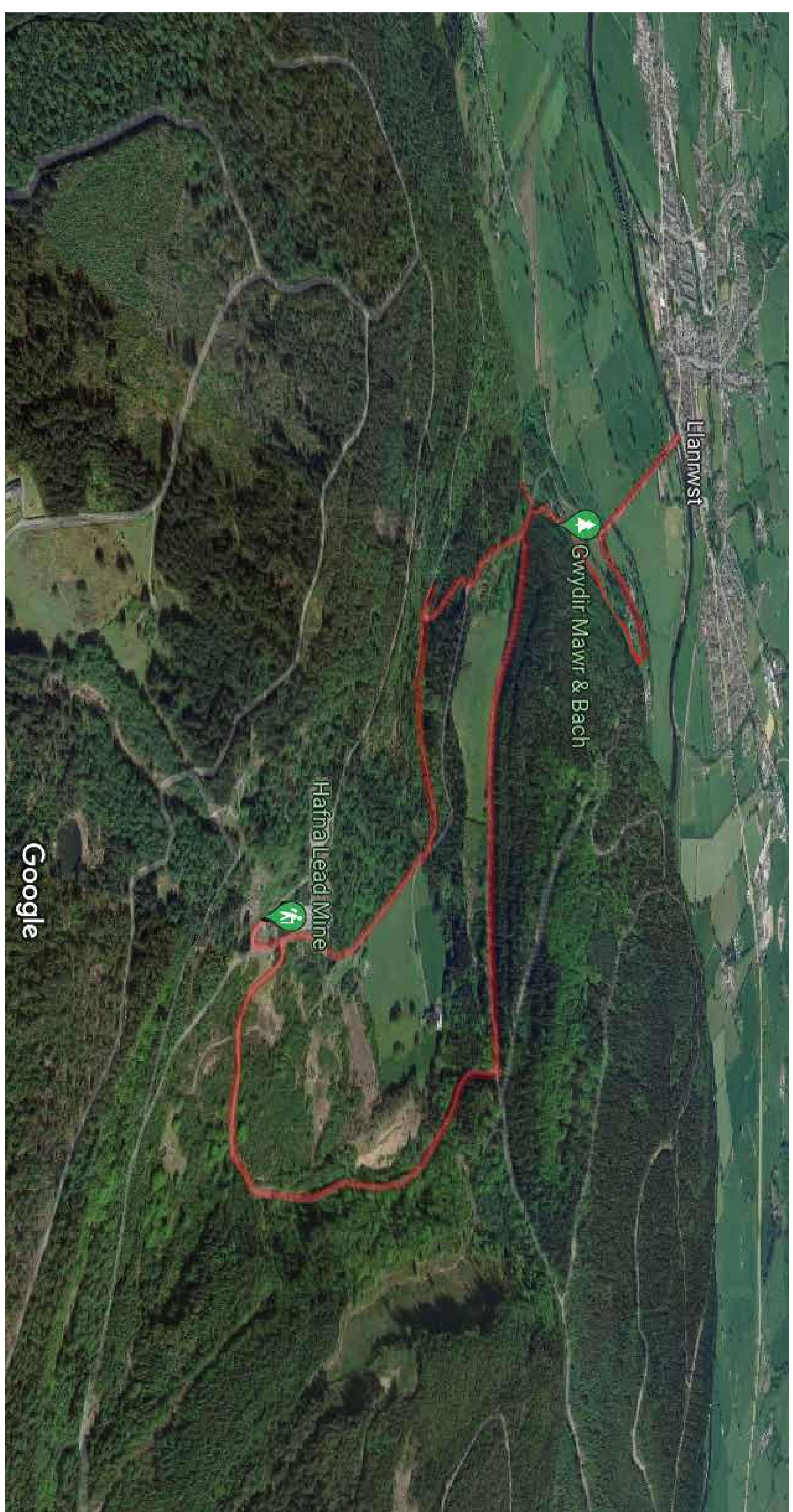
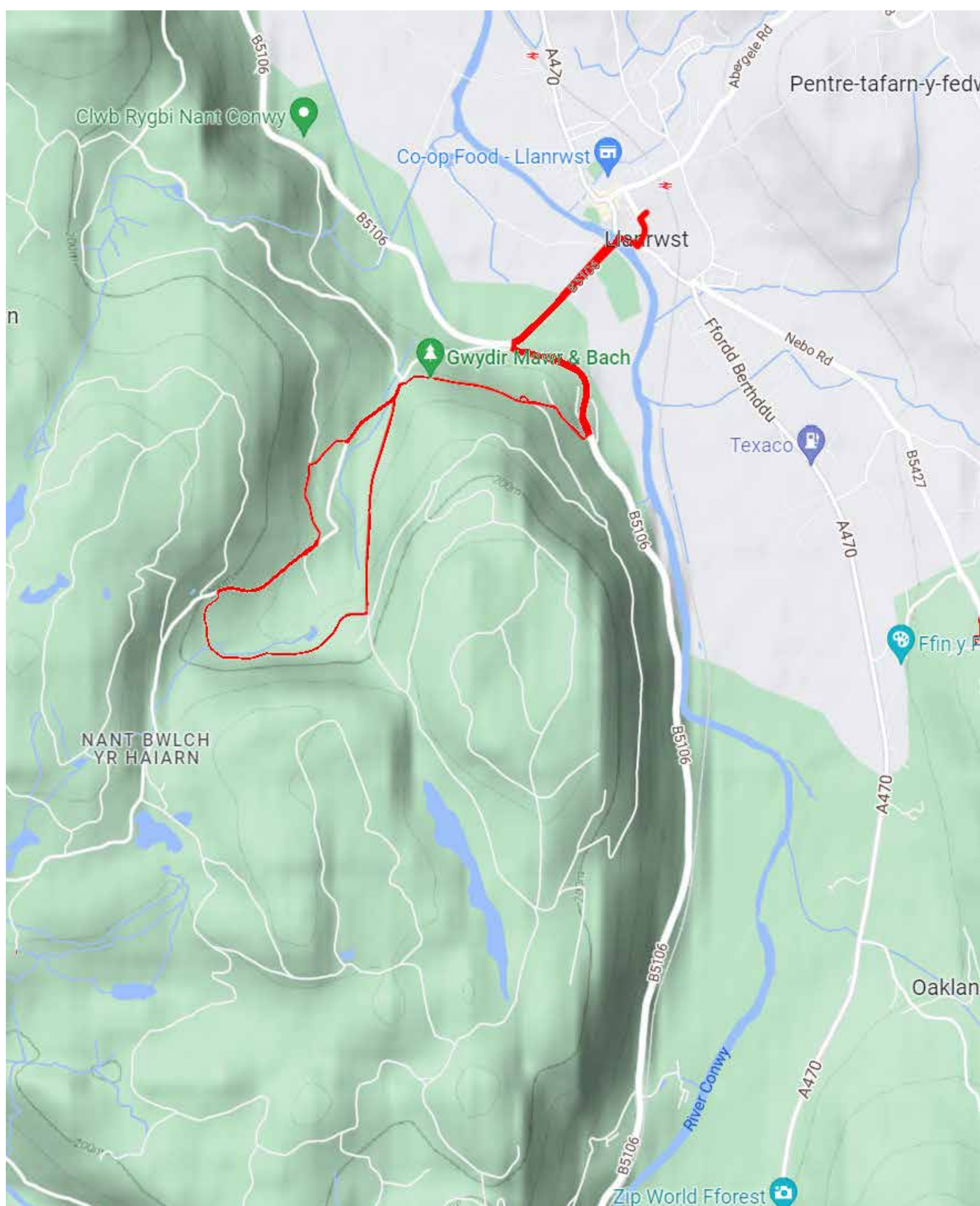


**The bottom of this road joins a main road. You MUST STOP. Please remember that you need to cross over, and walk on the road facing the traffic, back to the entrance of Gwydir Castle!**

Mount the footpath which curves right, to head down the straight Nant road, and takes you all the way back to the stone bridge.

Dismount and walk across over the stone bridge and turn right onto the pavement, and wait for a gap in the traffic to cross over the main road.

Opposite you will see a junction at the end of Watling street which leads you back to the Bike Hut in the Watling Car Pak.



Bike Hut, Unit 25, Watling Street Car Park. Llanrwst LI260LS

[www.gravitywheelers.com](http://www.gravitywheelers.com)

[Book Here](#)