

This route takes in the basic route of "The Nant" - the first easy access view point within the Gwydir forest.

This extended route is a good mix of exercise, view points and some extreme fun. But it has one grade 9 hill - as our moto goes "the more up - the more down you get!" You get to see both side of the Nant valley and the Conwy Valley, a spectacualr river and waterfall - View factor 9/10

The basic route to the Gwydir Forest playground is:

Come out of Watling Street car park and turn left and follow the road round and come to the junction for the A470.

IMPORTANT

You must NEVER use (ride) our scooters on the public highway, and your rental agreement requires you to knowlege this. At times where there is no pavement you must dismount and walk with your scooter!

Dismount and walk across the road and head to the stone bridge. WALK over the bridge pushing your scooter towards the little cottage called "Tu Hwnt I'r Bont - The bridge hut house". At the little cottage there is a footpath on your right where you can mount and start kick scootering down the strait Nant Road B5106 to Gwydir Castle!

IMPORTANT

It is the law, PEDESTRIANS ALWAYS have right of way on public footpaths! Be curtious and always stop scootering to pass pedestrians on a typical pavement, as you do not want to bump into them.

On the curve of the bend there is a left hand turn sign posted for Gwydir Castle. Take this turn, staying on the pavement until you reach the entrance and car park for Gwydir castle.



Please dismount and continue by walking on the road.

For about 400 yards on the curve of the bend you will see on the opposite side of the road another road leading up, and sign posted to Gwydir Uchaf Capel. Take this road and start your ascent.



At the top of the hill it levels off at the entrance to Gwydir Uchaf Chapel, turn left and head up a smaller hill.



Gwydir Uchaf Chapel



The Nant Valley view point

The top of this section is a fairly level part of the Nant. You need to turn right where within 50 yards you will get to the Nant bench for the first view point of the Conwy Valley.



Gwydir Mawr & Bach Car Park



The Big Hill

From here you can continue up into the Gwydir Mawr & Bach car park where many mountain bikers start their journey on this formally know **MTB route called the "Marin Trail"**.

Go through the car park to the road junction **(Please Stop)** as cars travel fast to get up the hill ! Turn left and walk up the hill for 20 yards.

You will then see on the left a foot path going up, and up, and up. Ok to make it sound not so bad, a quarter of the way is a little BMX track that is fun to play on. Half way on the right is a slip path down to a view point of the Nant Gwydyr river which can be impressive after recent rain.



View point for Nant gwydyr River

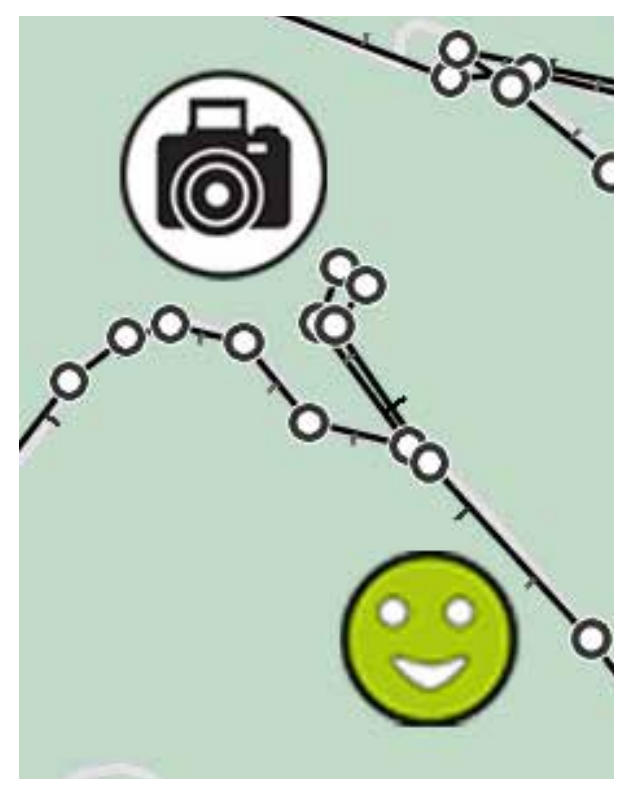
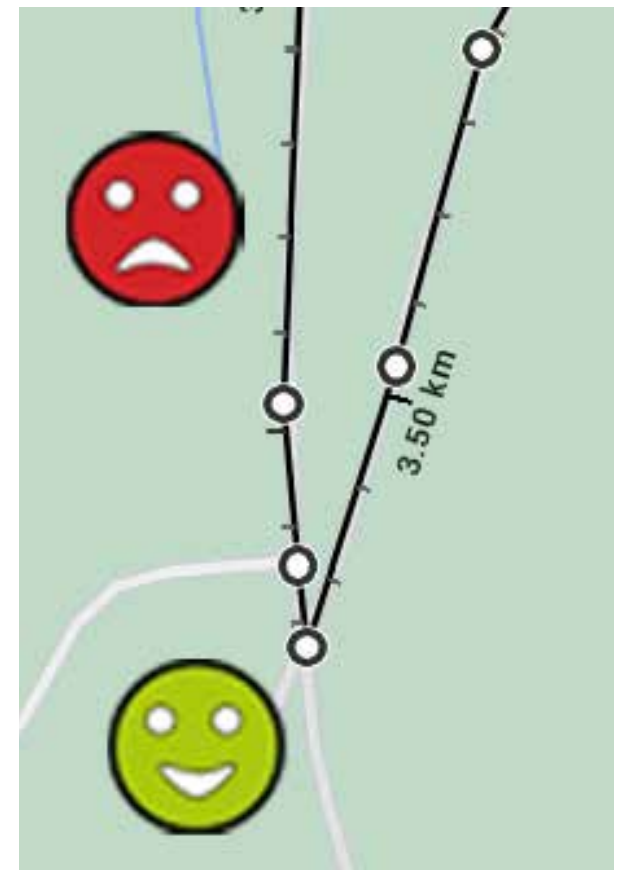


BMX Track

So when you get to the top you are at a junction wher you need to travel left.

This path has a little incline, but its is best walked to take in the view of the valley you have just walked up. If your fit, it is flat enough to scooter, and the path soon starts to head down hill and then up again to junction.

Your are now on the main foresty path down. Control your speed for two reasons! your safety and that of others. Also there is a bend that has a feed off to the left to a great view point, and you dont want to miss it!



After taking the left turn, there are a number of paths off to your right to get to the seated viewing area. The area also has some interest tree sculptures.

Retrace your route back to the bend and the main route down. Again control your speed as at the base of this track is sharp left bend, where another viewing point is situated.

An information boards provides detail of this prestigious bowling green built by Sir John Wynn in the 16th century. Setup up to enjoy the views whilst playing bowls, and was visited by Henry VII.



Bowling Green Picnic Area



Bowling Green Views

The best bit is yet to come with a cooling return on the flat down hill, do **NOT get to excessive speeds**, firstly your safety, but also that of other walkers use this track.

The bottom of the track leans left where you will pass the path you came up on. No need to slam on the brake as 20 yards ahead is a little round about which turns you round to heads you down a steep track and tarmac road down onto the main road.

Control your speed and beware cars travel on the tarmac road. At the main road dismount and walk over the the other side and walk to the right, facing the traffic. Walking until you arrive at the car park of Gwydir Castle where the pavement will start again.



Gwydir Castle view from Path



Peek over the wall of Gwydir Castle

The path curves right to head down the Nant road and takes you all the way to stone bridge.

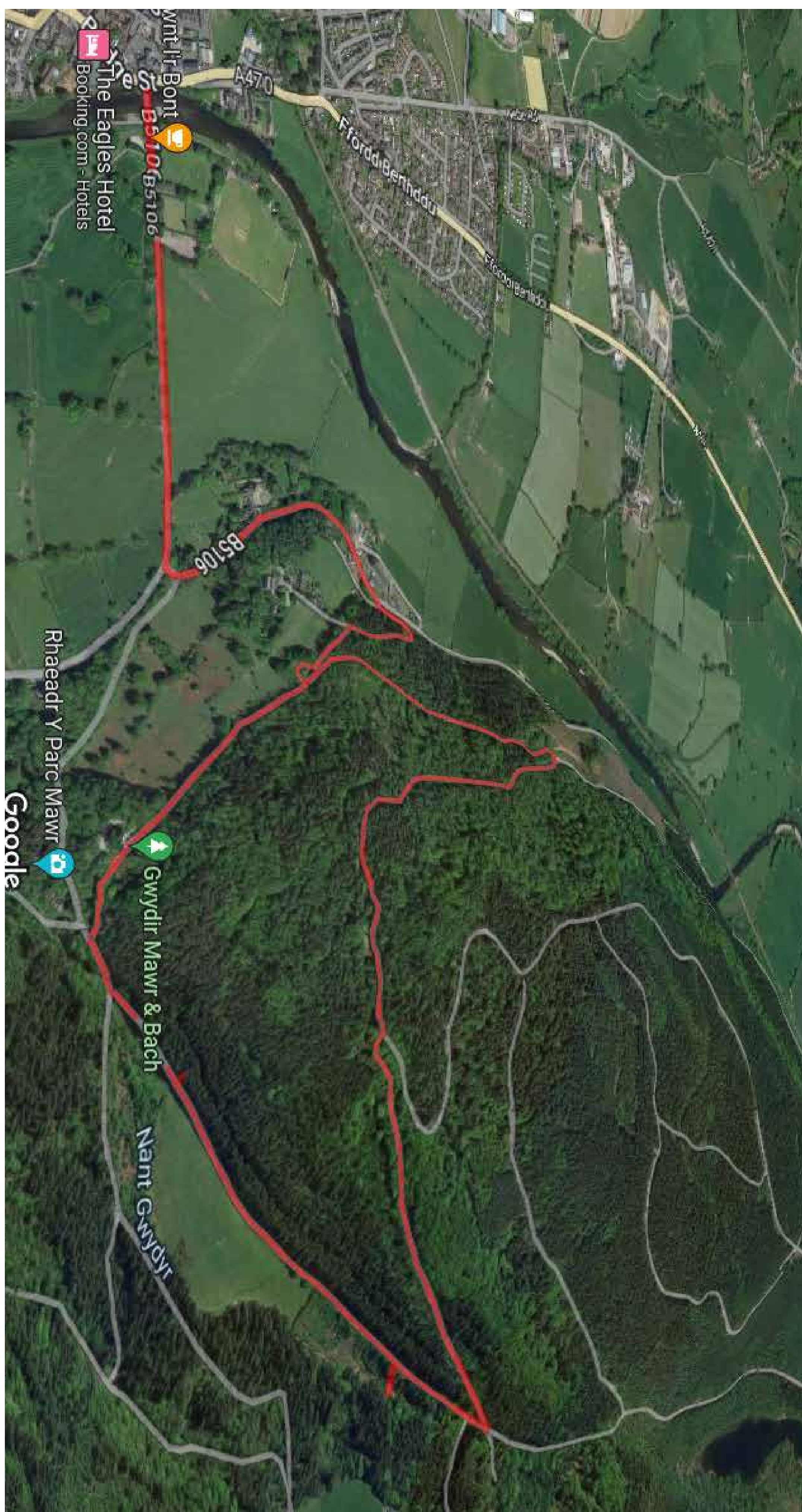
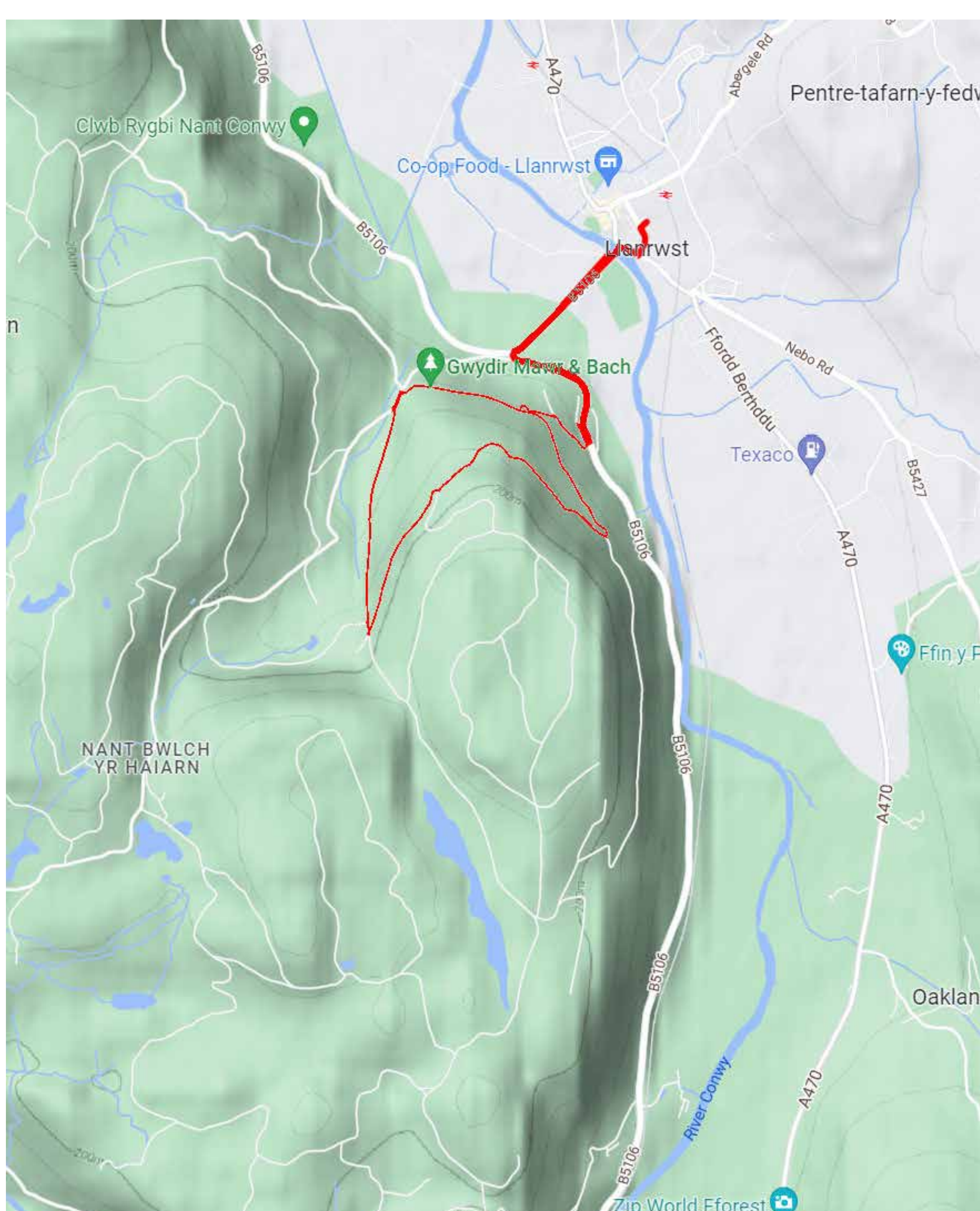
Dismount and walk across over the stone bridge and turn right onto the pavement and wait for a gap in the traffic to cross the main road. You will see a junction at the end of Watling street which leads you back to the Bike Hut.



Tu Hwnt yr Bont & Llanrwst Bridge



Entrance to Watling Street



Bike Hut, Unit 25, Watling Street Car Park. Llanrwst LI260LS
www.gravitywheelers.com
[Book Here](#)